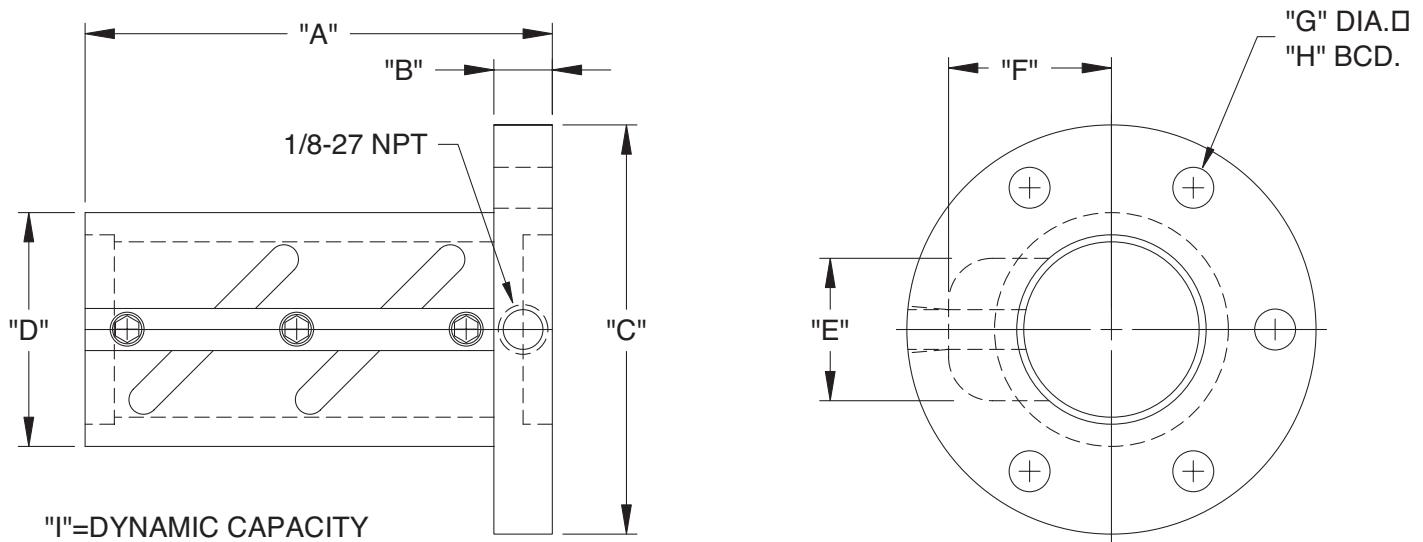


# EXTERNAL NUT / ENGLISH



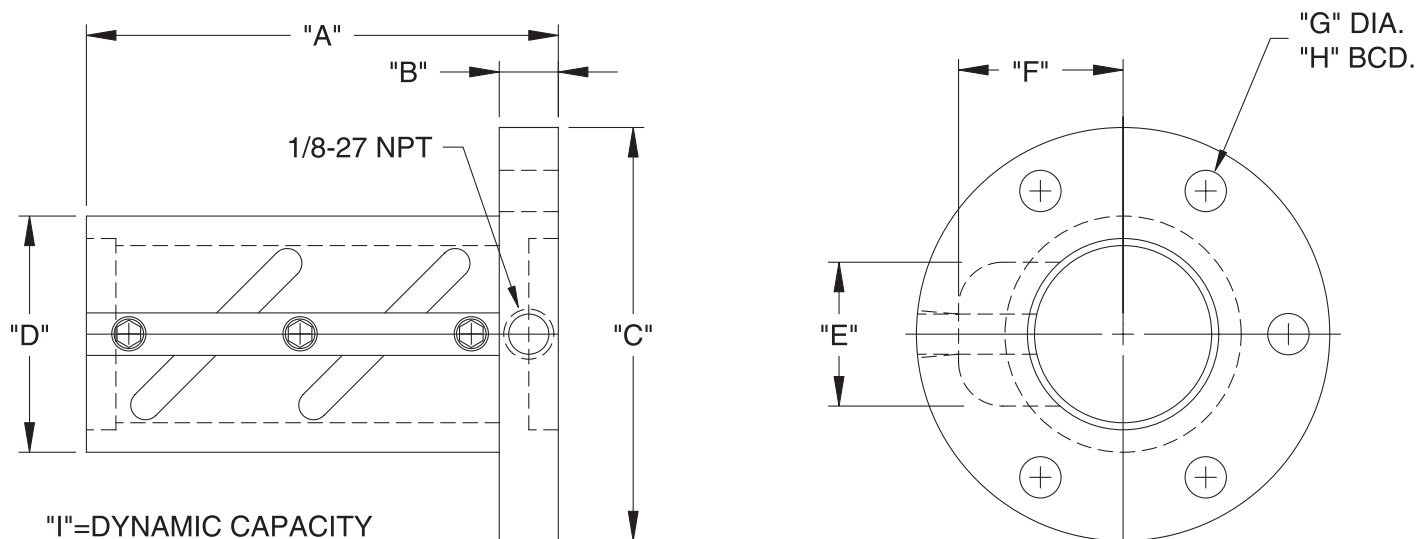
SCREW DIA.	LEAD	BALL DIA.	TOTAL # OF CKTS	TURNS/CKT	"A"	"B"	"C"	"D"	"E"	"F"	"G"	"H"	"I"
0.625	0.200	0.125	2	2.5	2.24	0.38	1.93	0.960	0.81	0.79	0.219	1.5	990
0.750	0.200	0.125	2	3.5	2.97	0.44	2.46	1.090	0.99	0.79	0.281	1.78	1481
0.750	0.250	0.125	2	3.5	3.36	0.44	2.46	1.090	0.99	0.79	0.281	1.78	1595
0.750	0.500	0.125	2	2.5	4.44	0.44	2.46	1.090	0.98	0.79	0.281	1.78	1520
0.875	0.200	0.125	2	3.5	2.97	0.44	2.59	1.215	1.12	0.86	0.281	1.90	1641
0.875	0.250	0.125	2	3.5	3.36	0.44	2.59	1.215	1.12	0.86	0.281	1.90	1768
0.875	0.500	0.125	2	2.5	4.44	0.44	2.59	1.215	1.10	0.86	0.281	1.90	1682
1.000	0.200	0.125	2	3.5	3.03	0.50	2.71	1.340	1.23	0.92	0.281	2.03	1794
1.000	0.250	0.156	2	3.5	3.42	0.50	2.75	1.373	1.28	0.97	0.281	2.06	2484
1.000	0.500	0.156	2	2.5	4.50	0.50	2.75	1.373	1.25	0.97	0.281	2.06	2364
1.250	0.200	0.125	2	3.5	3.03	0.50	3.15	1.590	1.36	1.04	0.344	2.37	2081
1.250	0.250	0.156	2	3.5	3.42	0.50	3.19	1.623	1.39	1.09	0.344	2.40	2882
1.250	0.500	0.156	2	2.5	4.50	0.50	3.19	1.623	1.37	1.09	0.344	2.40	2737
1.500	0.200	0.125	2	3.5	3.15	0.62	3.59	1.840	1.55	1.17	0.406	2.72	2350
1.500	0.250	0.156	2	3.5	3.54	0.62	3.62	1.873	1.58	1.22	0.406	2.75	3254
1.500	0.250	0.187	2	3.5	3.54	0.62	3.66	1.906	1.61	1.26	0.406	2.78	3996
1.500	0.500	0.250	2	3.5	5.95	0.62	3.93	2.175	1.73	1.49	0.406	3.05	6997
1.500	0.500	0.281	2	3.5	5.95	0.62	3.96	2.212	1.76	1.54	0.406	3.09	7989
1.750	0.200	0.125	2	3.5	3.28	0.75	3.84	2.090	1.77	1.29	0.406	2.97	2604
1.750	0.250	0.156	2	3.5	3.67	0.75	3.87	2.123	1.80	1.34	0.406	3.00	3606
1.750	0.250	0.187	2	3.5	3.67	0.75	3.91	2.156	1.83	1.39	0.406	3.03	4429
1.750	0.500	0.250	2	3.5	6.08	0.75	4.18	2.425	1.94	1.62	0.406	3.30	7753
1.750	0.500	0.281	2	3.5	6.08	0.75	4.21	2.462	1.97	1.67	0.406	3.34	8853
2.000	0.200	0.125	2	3.5	3.28	0.75	4.09	2.340	1.99	1.42	0.406	3.22	2846
2.000	0.250	0.156	2	3.5	3.67	0.75	4.12	2.373	2.02	1.47	0.406	3.25	3941
2.000	0.250	0.187	2	3.5	3.67	0.75	4.16	2.406	2.05	1.51	0.406	3.28	4840
2.000	0.500	0.250	2	3.5	6.08	0.75	4.43	2.675	2.16	1.74	0.406	3.55	8475
2.000	0.500	0.281	2	3.5	6.08	0.75	4.46	2.712	2.19	1.79	0.406	3.59	9676
2.000	0.500	0.375	2	3.5	6.33	0.75	4.56	2.812	2.30	1.94	0.406	3.69	13422
2.250	0.200	0.125	2	3.5	3.28	0.75	4.71	2.590	2.20	1.54	0.531	3.65	3078
2.250	0.250	0.156	2	3.5	3.67	0.75	4.75	2.623	2.23	1.59	0.531	3.69	4263
2.250	0.250	0.187	2	3.5	3.67	0.75	4.78	2.656	2.26	1.64	0.531	3.72	5235
2.250	0.500	0.250	2	3.5	6.08	0.75	5.05	2.925	2.38	1.87	0.531	3.99	9166
2.250	0.500	0.281	2	3.5	6.08	0.75	5.09	2.962	2.41	1.92	0.531	4.02	10465
2.250	0.500	0.375	2	3.5	6.33	0.75	5.19	3.062	2.52	2.06	0.531	4.12	14517
2.500	0.200	0.125	2	3.5	3.28	0.75	4.96	2.840	2.42	1.67	0.531	3.90	3302
2.500	0.250	0.156	2	3.5	3.67	0.75	5.00	2.873	2.45	1.72	0.531	3.94	4573
2.500	0.250	0.187	2	3.5	3.67	0.75	5.03	2.906	2.48	1.76	0.531	3.97	5616
2.500	0.500	0.250	2	3.5	6.21	0.88	5.30	3.175	2.59	1.99	0.531	4.24	9832

All measurements are subject to final engineering approvals.

## EXTERNAL NUT / ENGLISH (CONT.)

SCREW DIA.	LEAD	BALL DIA.	TOTAL # OF CKTS	TURNS/CKT	"A"	"B"	"C"	"D"	"E"	"F"	"G"	"H"	"I"
2.500	0.500	0.281	2	3.5	6.21	0.88	5.34	3.212	2.62	2.04	0.531	4.27	11226
2.500	0.500	0.375	2	3.5	6.46	0.88	5.44	3.312	2.73	2.19	0.531	4.37	15572
3.000	0.200	0.125	2	3.5	3.41	0.88	5.84	3.340	2.85	1.92	0.656	4.59	3728
3.000	0.250	0.156	2	3.5	3.80	0.88	5.87	3.373	2.88	1.97	0.656	4.62	5163
3.000	0.250	0.187	2	3.5	3.80	0.88	5.91	3.406	2.91	2.01	0.656	4.66	6341
3.000	0.500	0.250	2	3.5	6.21	0.88	6.18	3.675	3.03	2.24	0.656	4.93	11102
3.000	0.500	0.281	2	3.5	6.21	0.88	6.21	3.712	3.06	2.29	0.656	4.96	12676
3.000	0.500	0.375	2	3.5	6.46	0.88	6.31	3.812	3.17	2.44	0.656	5.06	17583
3.500	0.500	0.250	2	3.5	6.58	1.25	6.68	4.175	3.46	2.49	0.656	5.43	12302
3.500	0.500	0.281	2	3.5	6.58	1.25	6.71	4.212	3.49	2.54	0.656	5.46	14046
3.500	0.500	0.375	2	3.5	6.83	1.25	6.81	4.312	3.60	2.69	0.656	5.56	19484
3.500	1.000	0.375	2	3.5	10.67	1.25	6.81	4.312	3.60	2.69	0.656	5.56	24542
4.000	0.500	0.250	2	3.5	6.83	1.50	7.18	4.675	3.89	2.74	0.656	5.93	13446
4.000	0.500	0.281	2	3.5	6.83	1.50	7.21	4.712	3.92	2.79	0.656	5.96	15352
4.000	0.500	0.375	2	3.5	7.08	1.50	7.31	4.812	4.03	2.94	0.656	6.06	21296
4.000	1.000	0.375	2	3.5	10.92	1.50	7.31	4.812	4.03	2.94	0.656	6.06	26825

## EXTERNAL NUT / METRIC



SCREW DIA.	LEAD	BALL DIA.	# OF CKTS	TURNS/CKT	"A"	"B"	"C"	"D"	"E"	"F"	"G"	"H"	"I" (kgf)
16	5	3.175	1	3.5	41	10	60	40	22	19	4.5	50	332
16	10	3.175	1	1.5	42	11	63	40	22	19	5.5	51	202
20	5	3.175	2	2.5	56	11	67.0	44.0	25.9	20.7	5.5	55	522
25	5	3.175	2	2.5	55	11	73.0	33.7	30.7	23.2	6.8	51.1048	605
30	5	3.175	2	3.5	76	12	73.5	38.6	32.4	25.6	8.8	56.0832	912
30	6	3.962	2	3.5	84	12	74.4	39.5	33.2	26.8	8.8	56.9214	1247
40	5	3.175	2	3.5	80	16	83.5	48.6	41.1	30.6	10.8	66.0908	1103
40	6	3.962	2	3.5	88	16	84.4	49.5	41.9	31.9	10.8	66.929	1497
40	10	6.350	2	3.5	131	16	101.6	57.2	45.5	38.9	10.8	79.375	3030
50	5	3.175	2	3.5	84	20	93.5	58.6	49.7	35.6	10.8	76.0984	1272
50	6	3.962	2	3.5	92	20	94.4	59.5	50.5	36.8	10.8	76.9112	1737
50	10	6.350	2	3.5	135	20	111.6	67.2	54.1	43.9	10.8	89.3826	3516
60	6	3.962	2	3.5	92	20	104.4	69.5	59.2	41.8	13.0	86.9188	1962
60	10	6.350	2	3.5	135	20	121.6	77.1	62.8	48.9	13.0	99.3648	3970
63	8	6.350	2	3.5	110	20	125.0	80.7	67.0	52.0	13.0	100	3845
63	10	6.350	2	3.5	125	20	125.0	80.7	67.0	52.0	13.0	100	4142
63	20	9.525	2	2.5	162	20	145.0	85.0	71.0	61.0	13.0	115	6219
80	10	6.350	2	3.5	127	20	141.6	97.2	81.3	61.3	13.0	119.4	4834
80	20	9.525	2	3.5	168	20	145	100.6	84.6	66.2	13	122.8	9665

*All measurements are subject to final engineering approvals.*