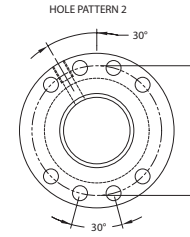
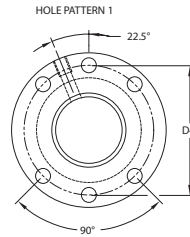
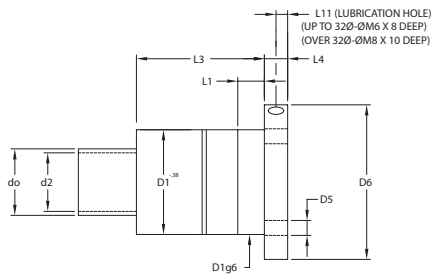
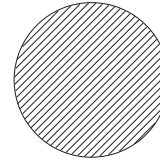


# DOUBLE INTERNAL NUT / METRIC

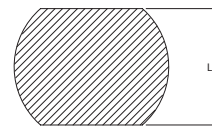
PRECISION GROUND BALLSCREWS  
FLANGED DOUBLE NUT  
NUT DESIGN TO DIN 69051 PART 5  
(WIPERS BOTH ENDS)



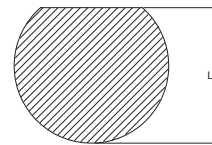
FLANGE FORM A



FLANGE FORM B



FLANGE FORM C



Dia (D0)	Lead	Ball Dia.	Turns	D2	D1g6	D4	D5	D6	L1	L3	L4	L8	L9	L11	Hole Pattern	ANSI STATIC LD KN	ANSI DYNAMIC 25400 M. KN	ISO/DIS STATIC LD KN	ISO/DIS DYNAMIC LD 1 MILLION REV KN
16	5	3.175	8	13.71	28.956	38	5.5	48	10	96.52	40	44	5	1	80.9	9.8	80.9	24.8	
			10	109.22	101.1	11.8				101.1					30.1				
20	10	3.962	8	17.71	32.944	47	6.6	58	10	96.60	44	51	5	1	102.7	11.5	102.7	29.1	
			10	109.22	128.4					13.9					128.4	35.3			
25	5	3.175	6	22.71	37.948	51	6.6	62	10	86.36	48	55	5	1	126.3	18.4	126.3	46.7	
			8							96.65					157.9	22.3	157.9	56.6	
25	10	4.7498	6	21.53	41.351	51	6.6	62	10	109.17	48	55	5	1	97.4	10.5	97.4	26.6	
			8							96.65					129.9	13.4	129.9	34.0	
32	5	3.175	6	29.71	44.958	65	9	80	10	117.09	62	71	6	1	162.4	16.2	162.4	41.3	
			8							130.81					194.8	19.0	194.8	48.3	
32	6	3.962	6	29.16	46.660	65	9	80	10	130.81	62	71	6	1	142.1	20.5	142.1	52.0	
			8							151.13					189.5	26.2	189.5	66.6	
32	10	6.350	6	27.38	54.356	65	9	80	10	154.31	62	71	6	1	236.8	31.8	236.8	80.7	
			8							176.53					284.2	37.2	284.2	94.4	
32	12	7.137	6	26.82	56.185	65	9	80	10	192.02	62	71	6	1	126.0	12.4	126.0	31.6	
			8							203.70					168.0	15.9	168.0	40.4	
32	14	9.525	6	25.10	63.754	65	9	80	10	226.06	62	71	6	1	252.0	22.5	252.0	57.3	
			8							215.90					207.8	21.6	207.8	54.9	
32	16	9.525	6	25.10	63.754	65	9	80	10	250.08	62	71	6	1	207.8	21.6	207.8	54.9	
			8							259.08					311.7	30.6	311.7	77.7	
40	5	3.175	6	37.72	52.959	78	9	93	10	86.36	70	81.5	7	2	323.1	42.9	323.1	108.8	
			8							97.79					484.6	60.7	484.6	154.3	
40	6	3.9624	6	37.16	54.661	78	9	93	10	118.11	70	81.5	7	2	484.6	60.7	484.6	154.3	
			8							95.50					359.8	51.7	359.8	131.2	
40	8	4.750	6	36.55	56.363	78	9	93	10	108.07	70	81.5	7	2	539.7	73.2	539.7	186.0	
			8							133.35					466.1	74.0	466.1	187.9	
40	10	6.35	6	35.38	62.357	78	9	93	10	114.30	70	81.5	7	2	699.3	104.8	699.3	266.3	
			8							130.81					466.2	77.3	466.2	196.4	
40	12	7.1374	6	34.82	64.186	78	9	93	10	133.35	70	81.5	7	2	699.3	109.6	699.3	278.4	
			8							154.94					466.2	77.3	466.2	211.6	
40	12	9.525	6	33.09	71.755	78	9	93	10	154.94	70	81.5	7	2	466.2	83.3	466.2	211.6	
			8							180.01					158.7	14.5	158.7	36.8	
40	16	7.1374	6	34.82	64.186	78	9	93	10	176.78	70	81.5	7	2	211.6	18.6	211.6	47.1	
			8							226.06					317.3	26.3	317.3	66.8	
40	20	6.35	6	35.38	62.357	78	9	93	10	196.6	70	81.5	7	2	317.3	26.3	317.3	66.8	
			8							226.06					196.6	19.7	196.6	50.0	
40	30	6.350	6	35.38	62.357	78	9	93	10	262.2	70	81.5	7	2	484.6	60.7	484.6	154.3	
			8							330.7					262.2	25.2	262.2	64.0	
50	5	3.175	6	47.70	62.967	93	11	110	10	393.2	85	97.5	8	2	539.7	73.2	539.7	186.0	
			8							466.1					466.2	77.3	466.2	196.4	
50	6	3.9624	6	47.17	64.668	93	11	110	10	466.1	85	97.5	8	2	699.3	104.8	699.3	266.3	
			8							539.7					699.3	109.6	699.3	278.4	
50	8	4.7498	6	46.55	66.370	93	11	110	10	466.2	85	97.5	8	2	466.2	83.3	466.2	211.6	
			8							539.7					466.2	77.3	466.2	196.4	
50	10	6.35	6	44.83	72.365	93	11	110	10	539.7	85	97.5	8	2	699.3	109.6	699.3	278.4	
			8							699.3					699.3	109.6	699.3	278.4	

All measurements are subject to final engineering approvals.

# DOUBLE INTERNAL NUT / METRIC (CONT.)

Dia (D0)	Lead	Ball Dia.	Turns	D2	D1g6	D4	D5	D6	L1	L3	L4	L8	L9	L11	Hole Pattern	ANSI STATIC LD KN	ANSI DYNAMIC 25400 M. KN	ISO/DIS STATIC LD KN	ISO/DIS DYNAMIC LD 1 MILLION REV KN	
50	16	9.525	6	43.1	81.763	93	11	110	16	190.50	16	85	97.5	8		570.0	83.6	570.0	212.4	
			8							223.52						107.1	760.0	272.0		
			12							288.54						151.8	1140.0	385.5		
	20	9.525	9.525	6	43.1	81.763	93	11	110	25	223.52	16	85	97.5	8		570.0	90.1	570.0	228.8
				8							265.43						115.4	760.0	293.0	
				12							347.98						163.5	1140.0	415.3	
	25	9.525	9.525	6	43.1	81.763	93	11	110	25	266.70	16	85	97.5	8		570.2	97.0	570.2	246.5
				8							320.04						124.3	760.2	315.7	
				12							375.92						173.5	1140.0	442.2	
	40	9.525	9.525	6	43.1	81.763	93	11	110	25	320.04	16	85	97.5	8		570.0	113.5	570.0	288.2
				8							375.92						145.3	760.0	369.1	
				12							459.74						202.0	1140.0	513.0	
50	9.525	9.525	6	43.1	81.763	93	11	110	25	452.12	16	85	97.5	8		570.0	122.2	570.0	310.4	
			8							459.74						19.8	254.6	50.4		
			12							570.0						25.4	339.4	64.6		
63	5	3.175	6	61.21	76.454	108	11	110	10	86.62	18	95	110	9		339.4	25.4	339.4	64.6	
			8							97.79						36.0	509.1	91.5		
			12							118.11						27.0	316.3	68.6		
	6	3.9624	3.9624	6	60.65	78.156	108	11	110	10	89.15	18	95	110	9		316.3	27.0	316.3	68.6
				8							99.56						34.6	421.7	87.9	
				12							119.88						49.0	632.6	124.6	
	8	6.35	6.35	6	58.87	85.852	108	11	125	16	114.30	18	95	110	9		499.5	50.3	499.5	127.7
				8							130.81						64.4	666.0	163.6	
				12							163.83						91.3	998.9	231.8	
	10	6.35	6.35	6	58.87	85.852	108	11	125	16	134.62	18	95	110	9		499.5	54.2	499.5	137.6
				8							154.94						69.4	666.0	176.2	
				12							195.58						98.3	998.9	249.7	
	12	9.525	9.525	6	56.59	95.250	115	13	135	25	153.67	18	95	110	9		735.3	90.0	735.3	228.7
				8							178.05						115.3	980.4	292.9	
				12							227.33						163.4	1470.7	415.0	
	16	9.525	9.525	6	56.59	95.250	115	13	135	25	190.50	18	95	110	9		735.3	99.1	735.3	251.7
				8							224.79						126.9	980.4	322.3	
				10							264.16						153.7	1225.6	390.5	
	20	9.525	9.525	4	56.59	95.250	115	13	135	25	180.84	18	95	110	9		1470.7	179.8	1470.7	456.8
				6							224.03						75.3	490.2	191.3	
				8							266.70						106.7	735.3	271.1	
	25	9.525	9.525	4	56.59	95.250	115	13	135	25	213.36	18	95	110	9		980.4	136.7	980.4	347.2
				6							266.70						136.7	980.4	347.2	
				8							320.04						193.7	1470.7	492.0	
30	9.525	9.525	4	56.59	95.250	115	13	135	25	381.00	18	95	110	9		490.2	81.1	490.2	206.0	
			6							420.62						115.0	735.3	292.0		
			8							420.62						147.2	980.4	373.9		
40	9.525	9.525	4	56.59	95.250	115	13	135	25	231.14	18	95	110	9		1225.6	178.4	1225.6	453.0	
			6							295.91						208.6	1470.7	529.9		
			8							358.14						86.2	490.2	218.9		
50	9.525	9.525	6	56.59	95.250	115	13	135	25	295.91	18	95	110	9		735.3	122.1	735.3	310.3	
			8							358.14						156.4	980.4	397.3		
			10							434.34						189.5	1225.6	481.4		
80	5	3.175	6	77.72	92.964	125	13	145	16	87.63	18	110	127.5	10		321.9	23.2	321.9	58.9	
			8							97.79						29.7	429.2	75.5		
			12							118.11						42.1	643.8	107.0		
	10	6.35	6.35	6	75.39	102.362	125	13	145	16	133.86	18	110	127.5	10		634.2	63.5	634.2	161.3
				8							154.94						81.3	845.5	206.6	
				12							195.58						115.3	1268.3	292.7	
	12	9.525	9.525	6	73.10	111.760	135	13	145	16	153.67	18	110	127.5	10		937.4	105.8	937.4	268.8
				8							179.07						135.5	1249.8	344.2	
				12							227.33						192.1	1874.7	487.9	
	16	9.525	9.525	6	73.10	111.760	135	13	145	16	190.50	18	110	127.5	10		937.4	116.5	937.4	295.8
				8							222.25						149.2	1249.8	378.9	
				12							287.02						211.4	1874.7	536.9	
	20	9.525	9.525	6	73.10	111.760	135	13	145	16	224.79	18	110	127.5	10		937.4	125.4	937.4	318.6
				8							266.70						160.7	1249.8	408.1	
				10							316.23						194.6	1562.3	494.4	
	25	9.525	9.525	6	73.10	111.760	135	13	145	16	349.25	18	110	127.5	10		1874.7	227.7	1874.7	578.3
				8							371.78						220.4	1641.8	559.9	
				10							422.58						267.1	2052.2	678.3	
	30	9.525	9.525	6	73.10	111.760	135	13	145	16	354.33	18	110	127.5	10		2462.7	312.4	2462.7	793.5
				8							398.78						143.6	937.4	364.7	
				12							438.15						183.9	1249.8	467.1	
	40	9.525	9.525	6	73.10	111.760	135	13	145	16	297.18	18	110	127.5	10		937.4	143.6	937.4	364.7
				8							359.41						183.9	1249.8	467.1	
				10							376.17						205.2	2052.2	678.3	
50	9.525	9.525	6	73.10	111.760	135	13	145	16	457.20	18	110	127.5	10		937.4	170.2	937.4	432.3	
			8							476.20						158.0	937.4	401.4		
			10							476.20						205.2	2052.2	678.3		
100	5	3.175	6	97.71	112.954	176	17.5	202	25	87.63	30	155	178.5	15		321.9	23.2	321.9	58.9	
			8							97.79						29.7	429.2	75.5		
			12							118.11						42.1	643.8	107.0		
	10	6.35	6.35	6	95.38	122.352	176	17.5	202	25	118.11	30	155	178.5	15		634.2	63.5	634.2	161.3
				8							134.62						81.3	845.5	206.6	
				12							154.94						115.3	1268.3	292.7	
	12	9.525	9.525	6	93.09	131.750	176	17.5	202	25	153.67	30	155	178.5	15		937.4	105.8	937.4	268.8
				8							179.07						135.5	1249.8	344.2	
				12							227.33						192.1	1874.7	487.9	
	16	9.525	9.525	6	93.09	131.750	176	17.5	202	25	190.50	30	155	178.5	15		937.4	116.5	937.4	295.8
				8							222.25						149.2	1249.8	378.9	
				12							287.02						211.4	1874.7	536.9	
	20	9.525	9.525	6	93.09	131.750	176	17.5	202	25	224.79	30	155	178.5	15		937.4	125.4	937.4	318.6
				8							266.70						160.7	1249.8	408.1	
				10							316.23						194.6	1562.3	494.4	
	25	9.525	9.525	6	93.09	131.750	176	17.5	202	25	349.25	30	155	178.5	15		1874.7	227.7	1874.7	578.3
				8							371.78						220.4	1641.8	559.9	
				10							422.58						267.1	2052.2	678.3	
	50	9.525	9.525	6	93.09	131.750	176	17.5	202	25	354.33	30	155	178.5	15		2462.7	312.4	2462.7	793.5
				8							398.78						143.6	937.4	364.7	
				12							438.15						183.9	1249.8	467.1	
	100	5	3.175	6	97.71	112.954	176	17.5	202	25	297.18	30	155	178.5	15		937.4	143.6	937.4	364.7
				8							359.41						183.9	1249.8	467.1	
				10							376.17						205.2	2052.2	678.3	
10		6.35	6.35	6	95.38	122.352	176	17.5	202	25	457.20	30	155	178.5	15		937.4	170.2	937.4	432.3
				8							476.20						158.0	937.4	401.4	
				10							47									

# DOUBLE INTERNAL NUT / METRIC (CONT.)

Dia (D0)	Lead	Ball Dia.	Turns	D2	D1g6	D4	D5	D6	L1	L3	L4	L8	L9	L11	Hole Pattern	ANSI	ANSI	ISO/DIS	ISO/DIS						
																STATIC LD KN	DYNAMIC 25400 M. KN	STATIC LD KN	DYNAMIC LD 1 MILLION REV KN						
100	25	12.7	6	90.81	138.608	176	202	202	25	284.48	30	155	178.5	15	2	1557.9	216.8	1557.9	550.7						
			336.55							2077.2						277.8	2077.2	705.4							
			398.78							2596.4						336.4	2596.4	854.5							
			438.15							3115.7						393.6	3115.7	999.7							
	30	9.525	6	93.09	131.750				154.94	16	17.5					25	297.18	155	178.5	12.5	2	1182.3	167.6	1182.3	425.7
			381.00														1576.4					214.6	1576.4	545.1	
			378.46														1182.3					184.4	1182.3	468.5	
			463.55														1576.4					236.2	1576.4	600.0	
	125	10	6.35	6	120.37				147.345	196	17.5					222	16	175	198.5	15	2	1182.3	198.7	1182.3	504.6
				8																		1335.3	110.3	1335.3	280.0
				10																		1669.1	133.6	1669.1	339.3
				12																		2002.9	156.2	2002.9	396.9
12		9.525	118.08	156.743	196	17.5	222	17.5	25	179.07	175	198.5	15	2	1984.4	184.4	1984.4	468.4							
										210.82					2480.5	223.4	2480.5	567.5							
										231.14					2976.6	261.3	2976.6	663.8							
										226.06					1984.4	202.9	1984.4	515.5							
16		12.7	115.80	163.601	196	17.5	222	17.5	25	265.43	175	198.5	15	2	2480.5	245.9	2480.5	624.5							
										290.83					2976.6	287.6	2976.6	730.5							
										266.70					1984.4	218.6	1984.4	555.2							
										317.50					2480.6	264.8	2480.6	672.7							
20	9.525	118.08	156.743	196	17.5	222	17.5	25	350.52	175	198.5	15	2	2976.8	309.8	2976.8	786.9								
									231.14					1966.0	235.1	1966.0	597.0								
									273.05					2621.4	301.0	2621.4	764.6								
									354.33					3932.1	426.6	3932.1	1083.6								
25	12.7	115.80	163.601	196	17.5	222	17.5	25	326.39	175	198.5	15	2	2621.2	324.2	2621.2	823.6								
									388.62					3276.5	392.8	3276.5	997.8								
									427.99					3931.8	459.5	3931.8	1167.2								
									312.42					1488.3	195.4	1488.3	496.2								
150	20	9.525	118.08	181.762	240	300	300	25	374.65	200	220	15	2	1984.4	250.2	1984.4	635.5								
									376.17					1488.3	215.0	1488.3	546.1								
									469.90					1488.3	231.6	1488.3	588.3								
									266.70					2392.7	247.6	2392.7	628.9								
	30	12.7	140.82	188.620				240	300	300	300			25	317.50	200	220	15	2	2990.8	300.0	2990.8	761.9		
															350.52					3589.0	350.9	3589.0	891.3		
															273.05					3165.6	341.3	3165.6	867.0		
															325.12					3957.0	413.5	3957.0	1050.4		
	40	12.7	140.82	188.620				240	300	300	300			25	355.60	200	220	15	2	4748.4	483.7	4748.4	1228.7		
															327.66					3165.6	367.7	3165.6	933.9		
															388.62					3957.0	445.4	3957.0	1131.4		
															429.26					4748.4	521.1	4748.4	1323.5		

All measurements are subject to final engineering approvals.