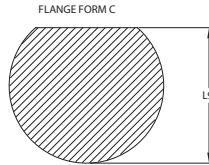
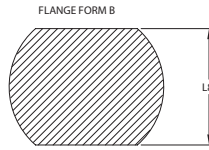
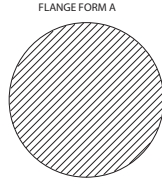
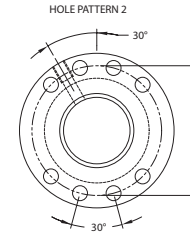
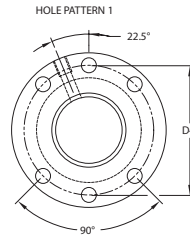
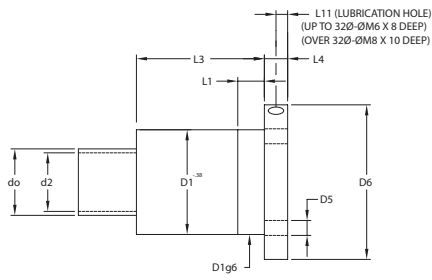


# INTERNAL NUT / METRIC

PRECISION GROUND BALLSCREWS  
FLANGED SINGLE NUT  
NUT DESIGN TO DIN 69051 PART 5  
(WIPERS BOTH ENDS)



\*(2) PC BALLNUT W/SHIM REQUIRED.

Dia (D0)	Lead	Ball Dia.	Turns	D2	D1g6	D4	D5	D6	L1	L3	L4	L8	L9	L11	Hole Pattern	ANSI STATIC LD KN	ANSI DYNAMIC 25400 M. KN	ISO/DIS STATIC LD KN	ISO/DIS DYNAMIC LD 1 MILLION REV KN
16	5	3.175	4	13.71	28.956	38	5.5	48	10	46.23	40	44	5	1	40.5	5.4	40.5	13.7	
			6							57.15					7.6	60.7	19.4		
			8							68.58					9.8	80.9	24.8		
20	10	3.9624	4	17.15	32.944	47	6.6	58	10	46.99	44	51	5	1	51.3	6.3	51.3	16.0	
			6							57.15					9.0	77.0	22.7		
			8							71.12					11.5	102.7	29.1		
25	5	3.175	4	22.71	37.948	51	6.6	62	10	80.01	48	55	1	1	128.4	13.9	128.4	35.3	
			6							74.93					10.1	63.1	25.7		
			8							96.52					14.4	94.7	36.5		
32	6	3.9624	4	29.71	44.958	65	9.0	80	16	118.87	62	71	6	2	126.3	18.4	126.3	46.7	
			6							46.99					7.4	64.9	18.8		
			8							57.15					10.5	97.4	26.6		
40	5	3.175	4	37.72	52.959	78	9.0	93	10	129.9	70	81.5	7	2	129.9	13.4	129.9	34.0	
			6							76.20					14.4	94.7	36.7		
			8							68.58					20.5	142.1	52.0		
50	8	4.7498	4	21.53	41.351	93	11.0	110	10	142.1	85	97.5	8	3	189.5	26.2	189.5	66.6	
			6							97.79					31.8	236.8	80.7		
			8							120.65					37.2	284.2	94.4		
60	10	6.35	4	27.38	54.356	110	11.0	110	10	144.78	97.5	110	9	4	236.8	31.8	236.8	80.7	
			6							100.33					37.2	284.2	94.4		
			8							91.44					44.0	349.6	103.5		
80	16	9.525	4	25.10	63.754	140	13.0	140	20	167.64	130	140	12	5	284.2	37.2	284.2	94.4	
			6							47.75					48.0	349.6	103.5		
			8							55.88					62.0	426.0	122.0		
100	20	12.7	4	31.75	76.601	170	13.0	170	25	187.96	150	160	15	6	426.0	48.0	426.0	122.0	
			6							48.26					62.0	426.0	122.0		
			8							60.96					81.0	513.0	147.0		
120	25	15.875	4	37.72	92.902	200	13.0	200	30	200.66	170	180	16	7	513.0	62.0	513.0	147.0	
			6							60.96					81.0	513.0	147.0		
			8							76.60					105.0	630.0	180.0		
150	30	19.05	4	44.958	114.30	230	13.0	230	35	233.1	190	200	18	8	630.0	81.0	630.0	180.0	
			6							81.28					105.0	630.0	180.0		
			8							107.95					138.0	789.0	228.0		
200	40	25.4	4	54.356	146.05	280	13.0	280	40	269.9	210	220	20	9	789.0	117.4	789.0	228.0	
			6							106.68					138.0	789.0	228.0		
			8							132.08					180.0	954.0	276.0		
250	50	31.75	4	63.754	187.96	330	13.0	330	45	349.6	240	250	22	10	954.0	147.0	954.0	276.0	
			6							149.86					180.0	954.0	276.0		
			8							187.96					240.0	1188.0	348.0		
300	75	39.625	4	76.601	244.78	390	13.0	390	50	426.0	270	280	24	11	1188.0	180.0	1188.0	348.0	
			6							187.96					240.0	1188.0	348.0		
			8							244.78					324.0	1467.0	426.0		
400	100	49.525	4	92.902	320.66	460	13.0	460	60	513.0	330	340	26	12	1467.0	240.0	1467.0	426.0	
			6							244.78					324.0	1467.0	426.0		
			8							320.66					432.0	1818.0	513.0		
500	150	63.5	4	114.30	426.0	550	13.0	550	75	630.0	400	410	28	13	1818.0	348.0	1818.0	513.0	
			6							426.0					432.0	1818.0	513.0		
			8							554.25					576.0	2232.0	630.0		
600	200	82.5	4	146.05	513.0	660	13.0	660	100	789.0	450	460	30	14	2232.0	426.0	2232.0	630.0	
			6							513.0					576.0	2232.0	630.0		
			8							660.0					756.0	2808.0	810.0		
800	300	127.0	4	200.66	680.0	840	13.0	840	150	954.0	600	610	36	15	2808.0	513.0	2808.0	810.0	
			6							680.0					756.0	2808.0	810.0		
			8							840.0					1008.0	3480.0	1008.0		
1000	500	182.5	4	280.66	918.0	1100	13.0	1100	200	1188.0	750	760	42	16	3480.0	630.0	3480.0	1008.0	
			6							918.0					1008.0	3480.0	1008.0		
			8							1188.0					1344.0	4320.0	1344.0		
1200	600	244.0	4	376.66	1224.0	1320	13.0	1320	250	1467.0	900	910	48	17	4320.0	810.0	4320.0	1344.0	
			6							1224.0					1344.0	4320.0	1344.0		
			8							1600.0					1792.0	5568.0	1792.0		
1500	900	366.0	4	554.25	1818.0	1650	13.0	1650	300	2006.6	1125	1130	54	18	5568.0	1008.0	5568.0	1792.0	
			6							1818.0					2016.0	5568.0	1792.0		
			8							2424.0					3224.0	7136.0	2424.0		
2000	1200	490.5	4	766.66	2448.0	2200	13.0	2200	375	2699.0	1500	1510	60	19	7136.0	1344.0	7136.0	2424.0	
			6							2448.0					2856.0	7136.0	2424.0		
			8							3264.0					4368.0	9168.0	3264.0		
2500	1800	736.5	4	1066.66	3264.0	2900	13.0	2900	475	3496.0	1950	1960	72	20	9168.0	1792.0	9168.0	3264.0	
			6							3264.0					3744.0	9168.0	3264.0		
			8							4352.0					5712.0	11808.0	4352.0		
3000	2250	892.5	4	1320.0	3996.0	3450	13.0	3450	575	4320.0	2325	2330	84	21	11808.0	2424.0	11808.0	4352.0	
			6							3996.0					4608.0	11808.0	4352.0		
			8							5328.0					6144.0	15168.0	5328.0		
4000	3000	1182.0	4	1760.0	5328.0	4600	13.0	4600	750	5712.0	2850	2860	108	22	15168.0	3264.0	15168.0	5328.0	
			6							5328.0					6144.0	15168.0	5328.0		
			8							7104.0					8192.0	19488.0	7104.0		
5000	4500	1717.5	4	2448.0	7344.0	5900	13.0	5900	1000	7666.6	3525	3530	144	23	19488.0	4352.0	19488.0	7344.0	
			6							7344.0					8568.0	19488.0	7344.0		
			8							9792.0					11424.0	24976.0	9792.0		
6000	6000	2289.0	4	3264.0	9888.0	7800	13.0	7800	1300	10224.0	4650	4660	192	24	24976.0	5328.0	24976.0	9888.0	
			6							9888.0					11424.0	24976.0	9888.0		
			8							13184.0					15232.0	31968.0	13184.0		
8000	8000	2976.0	4	4352.0	13184.0	10400	13.0	10400	1700	13696.0	6125	6130	256	25	31968.0	7344.0	31968.0	13184.0	
			6							13184.0					15232.0	31968.0	13184.0		
			8							17576.0					20304.0	42576.0	17576.0		
10000	12000	3960.0	4	5792.0	17576.0	13800	13.0	13800	2250	18144.0	8025	8030	336	26	42576.0	9888.0	42576.0	17576.0	
			6							17576.0					20304.0	42576.0	17576.0		
			8							23456.0					27072.0	56768.0	23456.0		
15000	18000	5280.0	4	7712.0	23456.0	18400	13.0	18400	2925	24224.0	10625	10630	422	27	56768.0	13184.0	56768.0	23456.0	
			6							23456.0					27072.0	56768.0	23456.0		
			8							31264.0					35776.0	75008.0	31264.0		
20000	24000	7040.0	4	10432.0	31264.0	24400	13.0	24400	3875	32224.0	14025	14030	560	28	75008.0	17576.0	75008.0	31264.0	
			6							31264.0					35776.0	75008.0	31264.0		
			8							41696.0					47664.0	100096.0	41696.0		
25000	30000	9360.0	4	14032.0	41696.0	32400	13.0	32400	5125	42824.0	18625	18630	736	29	100096.0	23456.0	100096.0	41696.0	
			6							41696.0					47664.0	100096.0	41696.0		
			8							55584.0					63552.0	134496.0	55584.0		
30000	36000	12160.0	4	18688.0	55584.0	43200	13.0	43200	6750	57024.0	24625	24630	9						

# INTERNAL NUT / METRIC (CONT.)

Dia (D0)	Lead	Ball Dia.	Turns	D2	D1g6	D4	D5	D6	L1	L3	L4	L8	L9	L11	Hole Pattern	ANSI STATIC LD KN	ANSI DYNAMIC 25400 M. KN	ISO/DIS STATIC LD KN	ISO/DIS DYNAMIC LD 1 MILLION REV KN									
50	10	6.35	4	44.83	72.365	93	11.0	110	16	79.25	16	8.5	97.5	8		259.6	32.4	259.6	82.2									
			6							100.33						389.4	45.9	389.4	116.6									
			8							123.19						519.2	58.8	519.2	149.3									
			12							170.18						778.7	83.3	778.7	211.5									
	16	9.525	43.10	4	81.763				139.70	25						110	16	118.11	16	8.5	97.5	8			380.0	59.0	380.0	149.9
				6														152.40							570.0	83.6	570.0	212.4
				8														189.23							760.0	107.1	760.0	272.0
				12														263.14							1140.0	151.8	1140.0	385.5
	20	9.525	43.10	4	81.763				181.61	25						110	16	199.77	16	8.5	97.5	8			380.0	63.6	380.0	161.4
				6														228.60							570.0	90.1	570.0	228.8
				8														268.91							760.0	115.4	760.0	293.0
				12														368.26							1140.0	151.8	1140.0	411.5
25	9.525	43.10	4	81.763	220.98	25	110	16	220.98	16	8.5	97.5	8			380.1	68.5	380.1	173.9									
			6						250.98							570.2	97.0	570.2	246.5									
			8						290.98							760.0	122.4	760.0	319.9									
			12						390.98							1140.0	151.8	1140.0	438.3									
30	6.35	43.10	4	81.763	263.14	25	110	16	263.14	16	8.5	97.5	8			380.0	63.6	380.0	161.4									
			6						293.14							570.0	90.1	570.0	228.8									
			8						333.14							760.0	115.4	760.0	293.0									
			12						433.14							1140.0	151.8	1140.0	411.5									
63	5	3.175	4	61.21	76.454	108	11.0	125	10	46.99	18	95	110	9		169.7	14.0	169.7	35.6									
			6							57.15						254.6	19.8	254.6	50.4									
			8							69.85						339.4	25.4	339.4	64.6									
			12							92.71						509.1	36.0	509.1	91.5									
	6	3.9624	60.65	4	78.156				107.95	10						110	125	53.34	18	95	110	9			210.9	19.1	210.9	48.4
				6														66.04							316.3	27.0	316.3	68.6
				8														80.01							421.7	34.6	421.7	87.9
				12														107.95							632.6	49.0	632.6	124.6
	8	6.35	58.87	4	85.852				166.04	10						110	125	66.04	18	95	110	9			333.0	35.5	333.0	90.1
				6														82.55							499.5	50.3	499.5	127.7
				8														101.60							666.0	64.4	666.0	163.6
				12														138.43							998.9	91.3	998.9	231.8
10	6.35	58.87	4	85.852	180.01	10	110	125	80.01	18	95	110	9			333.0	38.2	333.0	97.1									
			6						100.33							499.5	54.2	499.5	137.6									
			8						123.19							666.0	69.4	666.0	176.2									
			12						170.18							998.9	98.3	998.9	249.7									
12	9.525	56.59	4	95.250	201.93	10	110	125	92.71	18	95	110	9			490.2	63.5	490.2	161.3									
			6						118.11							735.3	90.0	735.3	228.7									
			8						146.05							980.4	115.3	980.4	292.9									
			12						201.93							1470.7	163.4	1470.7	415.0									
16	9.525	56.59	4	95.250	218.63	10	110	125	118.11	18	95	110	9			490.2	69.9	490.2	177.6									
			6						152.40							735.3	99.1	735.3	251.7									
			8						189.23							980.4	126.9	980.4	322.3									
			12						264.16							1470.7	179.8	1470.7	456.8									
20	9.525	56.59	4	95.250	228.60	10	110	125	228.60	18	95	110	9			1225.6	153.7	1225.6	390.5									
			6						264.16							1470.7	179.8	1470.7	456.8									
			8						282.88							1666.0	198.3	1666.0	500.0									
			12						382.88							2364.5	262.4	2364.5	669.9									
25	9.525	56.59	4	95.250	264.16	10	110	125	264.16	18	95	110	9			1470.7	179.8	1470.7	456.8									
			6						282.88							1666.0	198.3	1666.0	500.0									
			8						290.98							1735.3	207.0	1735.3	527.1									
			12						368.26							2364.5	262.4	2364.5	669.9									
80	5	3.175	4	77.72	92.964	125	13.5	145	16	46.99	20	110	127.5	10		214.6	16.4	214.6	41.6									
			6							57.15						321.9	23.2	321.9	58.9									
			8							69.85						429.2	29.7	429.2	75.5									
			12							92.71						643.8	42.1	643.8	107.0									
	10	6.35	75.39	4	102.362				100.33	125						13.5	145	80.01	20	110	127.5	10			422.8	44.8	422.8	113.8
				6														100.33							634.2	63.5	634.2	161.3
				8														124.46							845.5	81.3	845.5	206.6
				12														170.18							1268.3	115.3	1268.3	292.7
	12	9.525	73.10	4	111.760				182.88	125						13.5	145	92.96	20	110	127.5	10			624.9	74.7	624.9	189.7
				6														118.11							937.4	105.8	937.4	268.8
				8														146.05							1249.8	135.5	1249.8	344.2
				12														201.93							1874.7	192.1	1874.7	487.9
16	9.525	73.10	4	111.760	201.93	125	13.5	145	118.36	20	110	127.5	10			624.9	82.2	624.9	208.7									
			6						152.40							937.4	116.5	937.4	295.8									
			8						189.23							1249.8	149.2	1249.8	378.9									
			12						264.16							1874.7	211.4	1874.7	536.9									
20	9.525	73.10	4	111.760	224.79	125	13.5	145	140.97	20	110	127.5	10			624.9	88.5	624.9	224.8									
			6						182.88							937.4	125.4	937.4	318.6									
			8						224.79							1249.8	160.7	1249.8	408.1									
			12						290.98							1874.7	211.4	1874.7	536.9									
25	9.525	73.10	4	111.760	246.38	125	13.5	145	168.15	20	110	127.5	10			624.9	95.3	624.9	242.2									
			6						220.98							937.4	135.1	937.4	343.2									
			8						246.38							1182.3	143.6	1182.3	364.7									
			12						322.88							1576.4	187.5	1576.4	476.3									
30	9.525	73.10	4	111.760	264.16	125	13.5	145	246.38	20	110	127.5	10			624.9	103.3	624.9	262.4									
			6						264.16							937.4	116.5	937.4	295.8									
			8						282.88							1182.3	123.5	1182.3	313.7									
			12						368.26							1576.4	187.5	1576.4	476.3									
100	5	3.175	4	97.71	112.954	145	17.5	165	16	48.26	22	130	147.5	11		538.1	34.5	538.1	87.7									
			6							57.15						807.1	49.0	807.1	124.3									
			8							69.85						1038.6	63.6	1038.6	163.6									
			12							92.71						1576.4	105.8	1576.4	249.7									
	10	6.35	95.38	4	122.352				171.45	145						17.5	165	80.01	22	130	147.5	11			531.6	52.2	531.6	132.6
				6														100.33							797.4	74.0	797.4	187.9
				8														124.46							1063.2	94.7	1063.2	240.6
				12														171.45							1594.8	134.3	1594.8	341.0
	12	9.525	93.09	4	131.750				194.48	145						17.5	165	94.48	22	130	147.5	11			788.2	87.2	788.2	221.4
				6														119.38							1182.3	123.5	1182.3	313.7
				8														147.32							1576.4	158.2	1576.4	401.8
				12														204.00							2364.5	224.2	2364.5	569.4
16	9.525	93.09	4	131.750	204.00	145	17.5	165	120.65	22	130	147.5	11			788.2	95.9	788.2	243.6									
			6						154.90							1182.3	135.9	1182.3	345.3									
			8						190.50							1576.4	174.1	1576.4	442.2									
			12						266.70							2364.5	246.7	2364.5	626.7									
20	9.525	93.09	4	131.750	214.25	145	17.5	165	142.25	22	130	147.5	11			788.2	103.3	788.2	262.4									
			6						182.88							1182.3	146.4	1182.3	371.9									
			8						231.14							1576.4	187.5	1576.4	476.3									
			12						279.40							2364.5	224.2	2364.5	569.4									
25	12.7	90.81	4	138.608	220.98	145	17.5	165	170.18	22	130	147.5	11			1182.3	157.7	1182.3	400.6									
			6						220.98							1038.6	153.0	1038.6	388.6									
			8						287.02							1557.9	216.8	1557.9	550.8									
			12						368.26							2364.5	262.4	2364.5	669.9									
125	6.35	120.37	4	147.345	170.18	176	17.5	210	124.46	22	130	147.5	12.5			1335.3	110.3	1335.3	280.0									
			6						147.32							1669.1	133.6	1669.1	339.3									
			8						170.18							2002.9	156.2	2002.9	396.9									
			12						229.87</																			